

R1W R1E

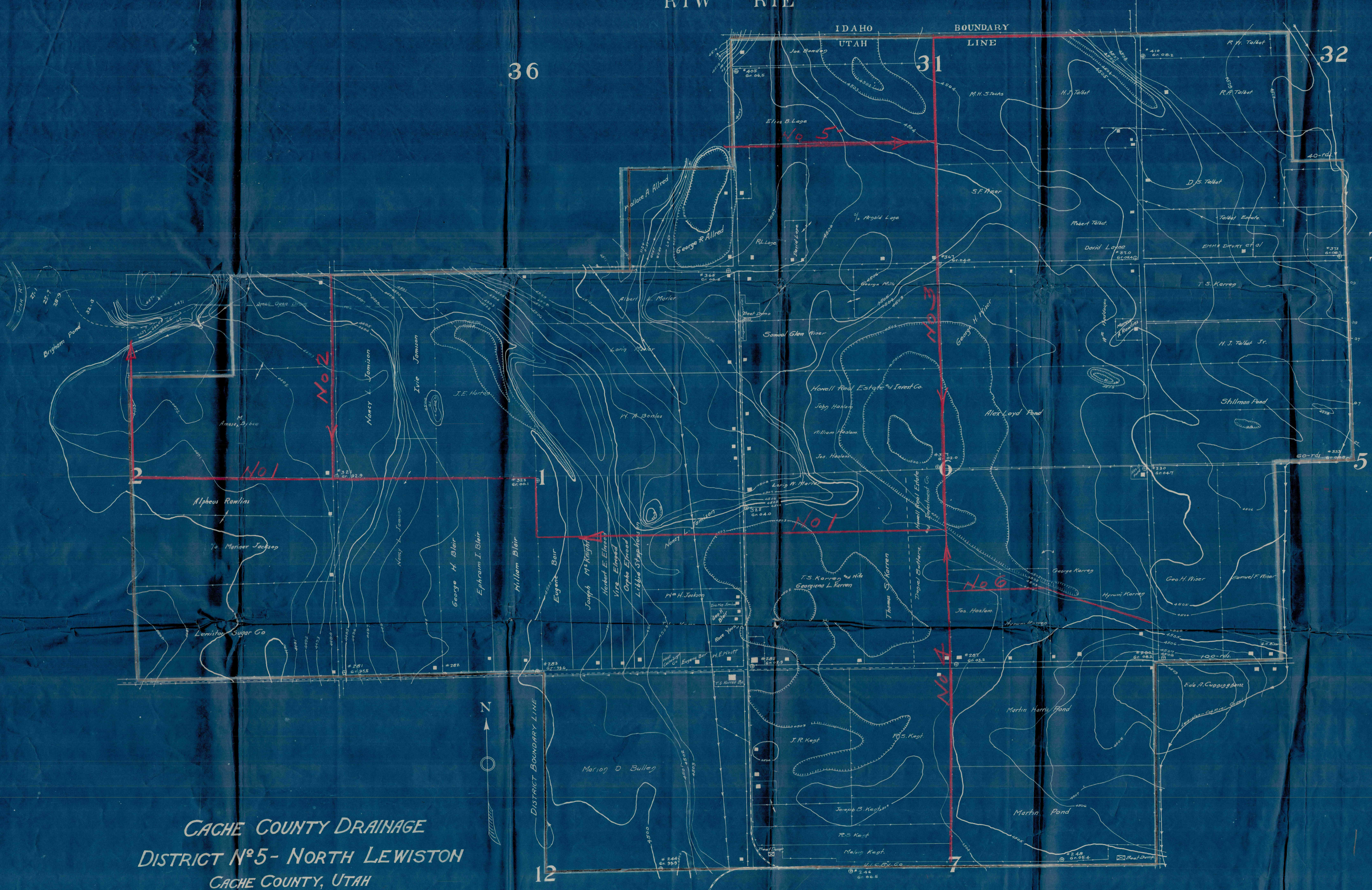
IDAHO
UTAH
BOUNDARY
LINE

36

31

32

T 15N
T 14N



CACHE COUNTY DRAINAGE
DISTRICT N°5 - NORTH LEWISTON
 CACHE COUNTY, UTAH
 SEPTEMBER - 1922 - SCALE 1" = 400'

SUPERVISORS
 GEORGE KARREN - AMASA M. BYBEE - STILLMAN POND.
 DISTRICT BOUNDARY LINE
 DRAINS.

R1W R1E